



VIRTUAL DRIVE INSTALLATION MANUAL

What is a virtual drive? It is a virtual file system that presents any data to end-user or applications as files and folders of a local virtual disk. Virtual drive is a non-existing drive that does not physically exist in the computer.

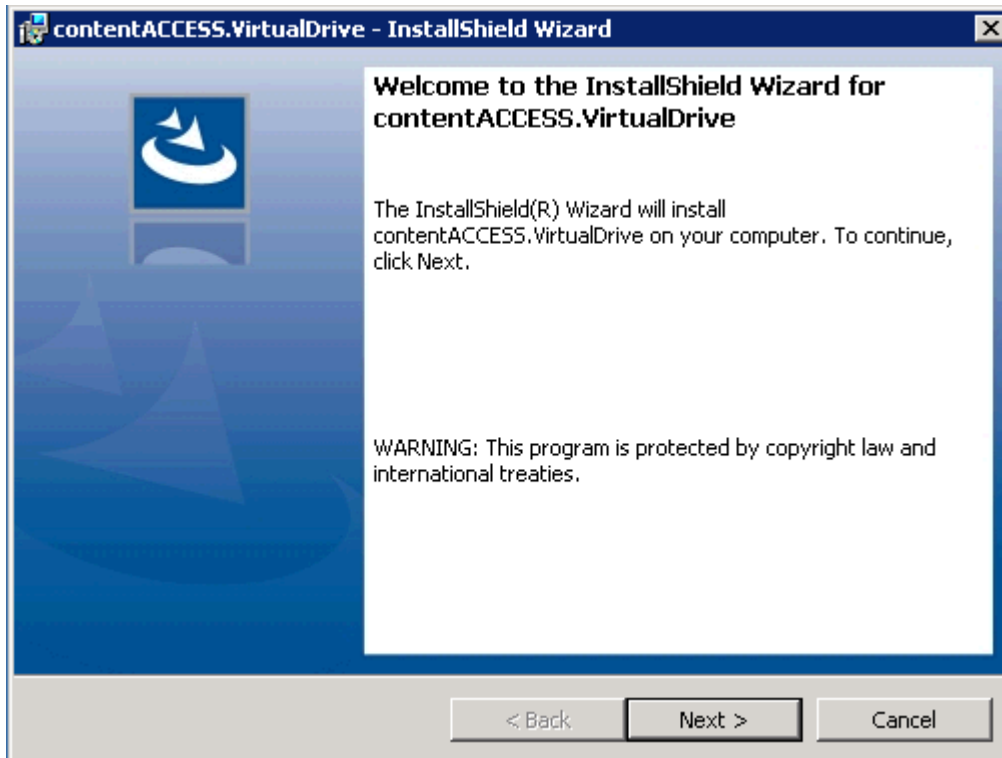
The contentACCESS Virtual Drive was developed by TECH-ARROW and serves as a key access point between the end user and the contentACCESS archive. The archived files can be very easily reopened/restored with the help of shortcuts. These shortcuts replace the original file in the original destination, and through the virtual drive, they link to the archived item, which is physically present in the contentACCESS archive. This drive can be also shared with other users (employees of the company), so they can easily browse for any archived files in case of need, too.

This guide will lead you through the installation process of the virtual drive. Let's start with it!

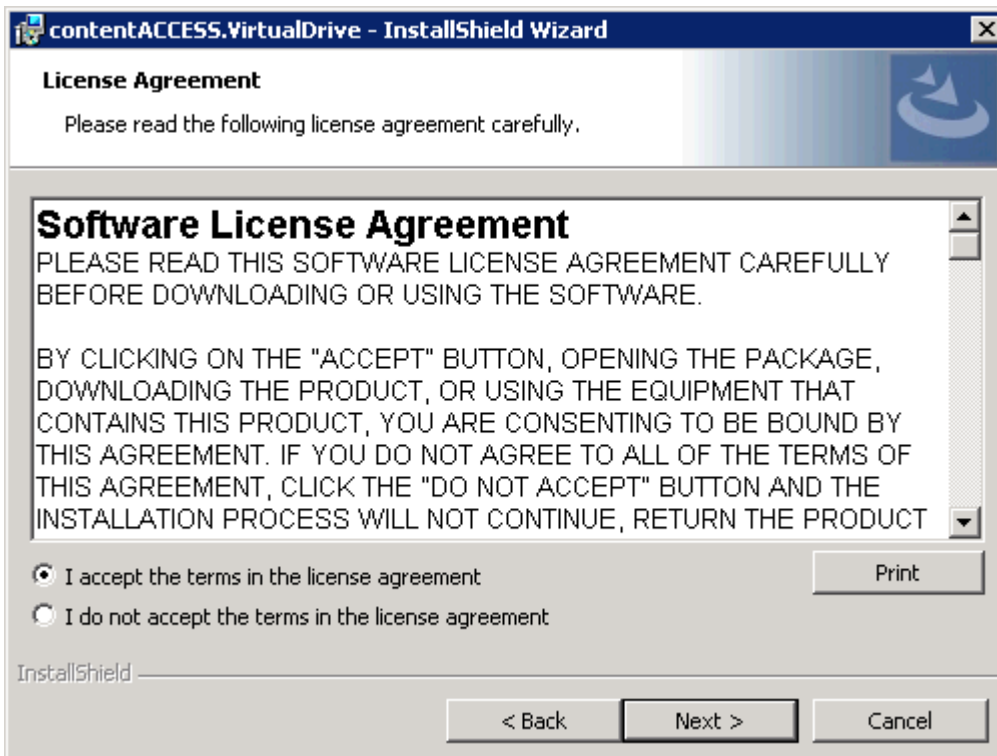


Download and run the setup package (VirtualDrive_x64.exe). As default it unzips to **c:\TECH-ARROW\contentACCESS_Package\Setups\contentACCESS** directory. Run the the Virtual Drive installation (VirtualDrive_x64.exe) from the the installation folder where contentACCESS unpacked the packages during the installation process (e.g. **c:\TECH-ARROW\contentACCESS_Package\Setups\contentACCESS**).

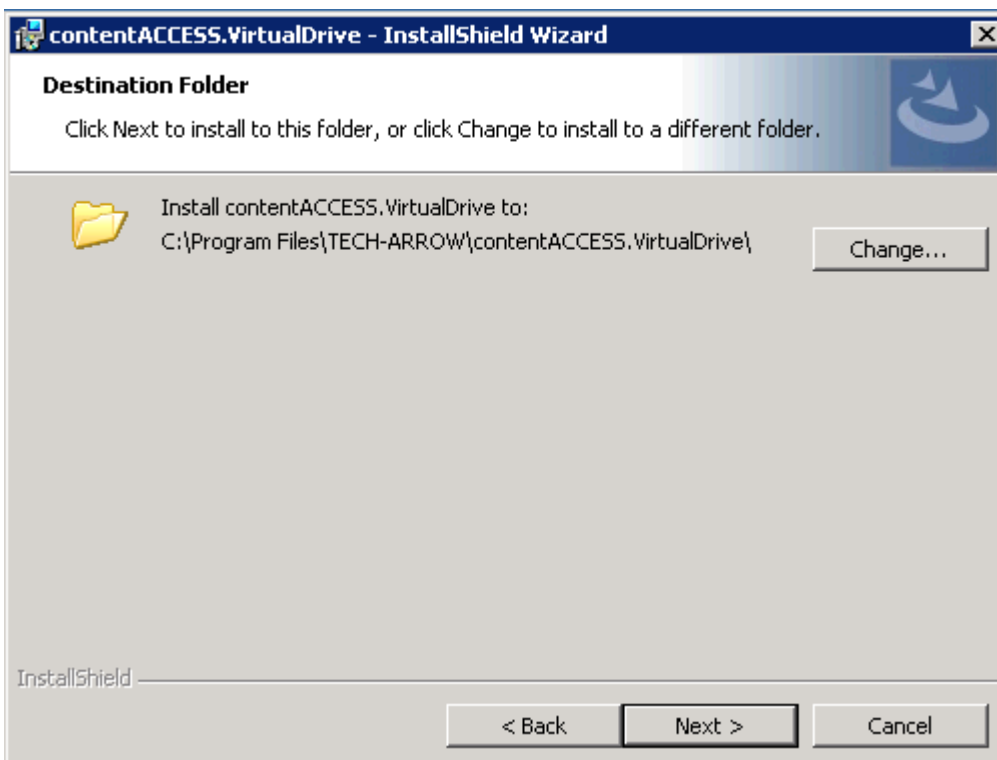
1. In the following window click **Next**:



2. **EULA.** After you have read the Software License Agreement carefully check checkbox **I accept the terms in the license agreement** and click **NEXT**.



- 3. Destination folder.** The next step is to select the destination folder. As default the product installs in C:\Program Files\TECH-ARROW\contentACCESS.VirtualDrive folder. The installation folder can be changed by using the **Change** button. Click **NEXT**.





4. **Logon information.** Specify the user name and password of the user under whom the Virtual Drive service will run. The user account must be in form Domain\Username, or it is also allowed to use **LocalSystem** as username.

contentACCESS.VirtualDrive - InstallShield Wizard

Logon Information

Specify a user name and password

Specify the user name and password of the user account that will logon to use this application. The user account must be in the form DOMAIN\Username.

User name:

Password:

InstallShield

< Back Next > Cancel

If you do not want to use LocalSystem (no password needed), then use the Browse button to specify a domain user, and add the password to it:

Browse for a User Account

Use the browse buttons to select a domain\server and a user name.

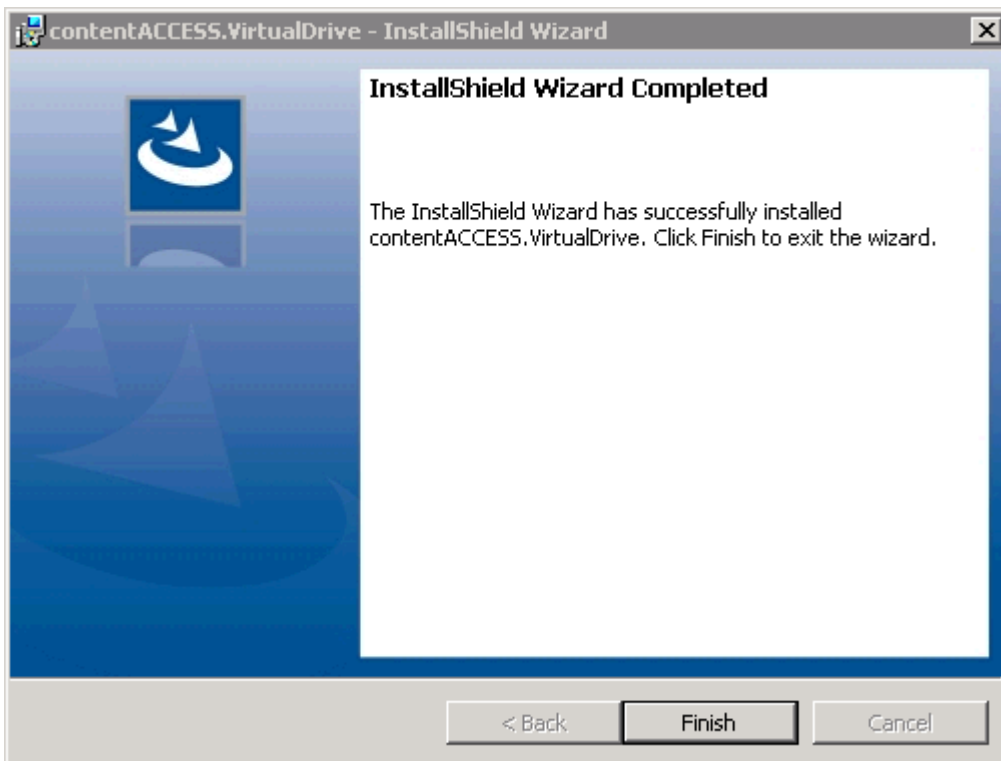
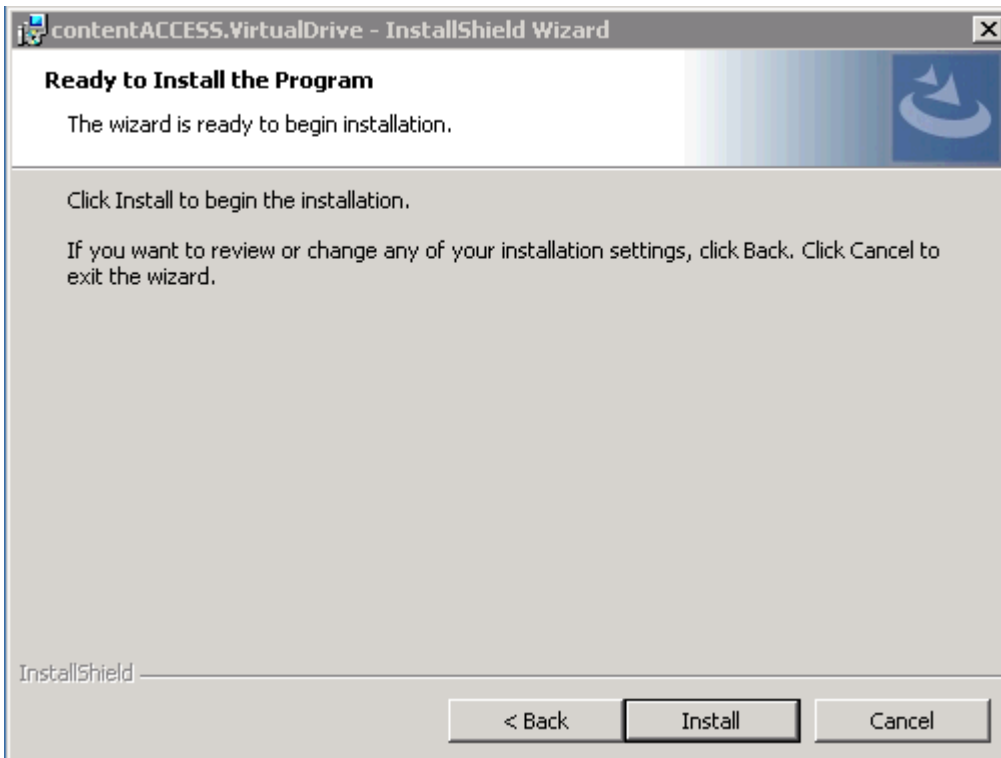
Domain or server:

User name:

OK Cancel

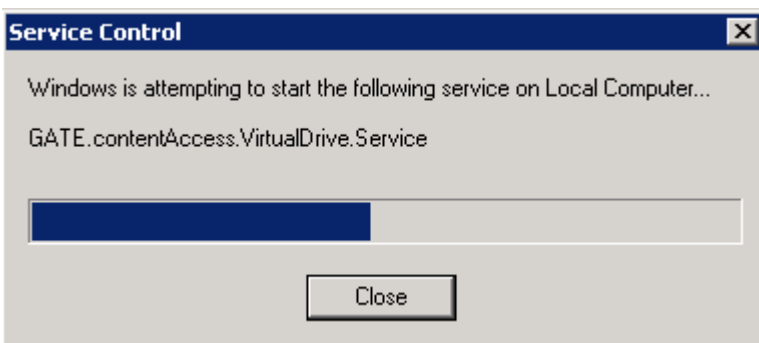
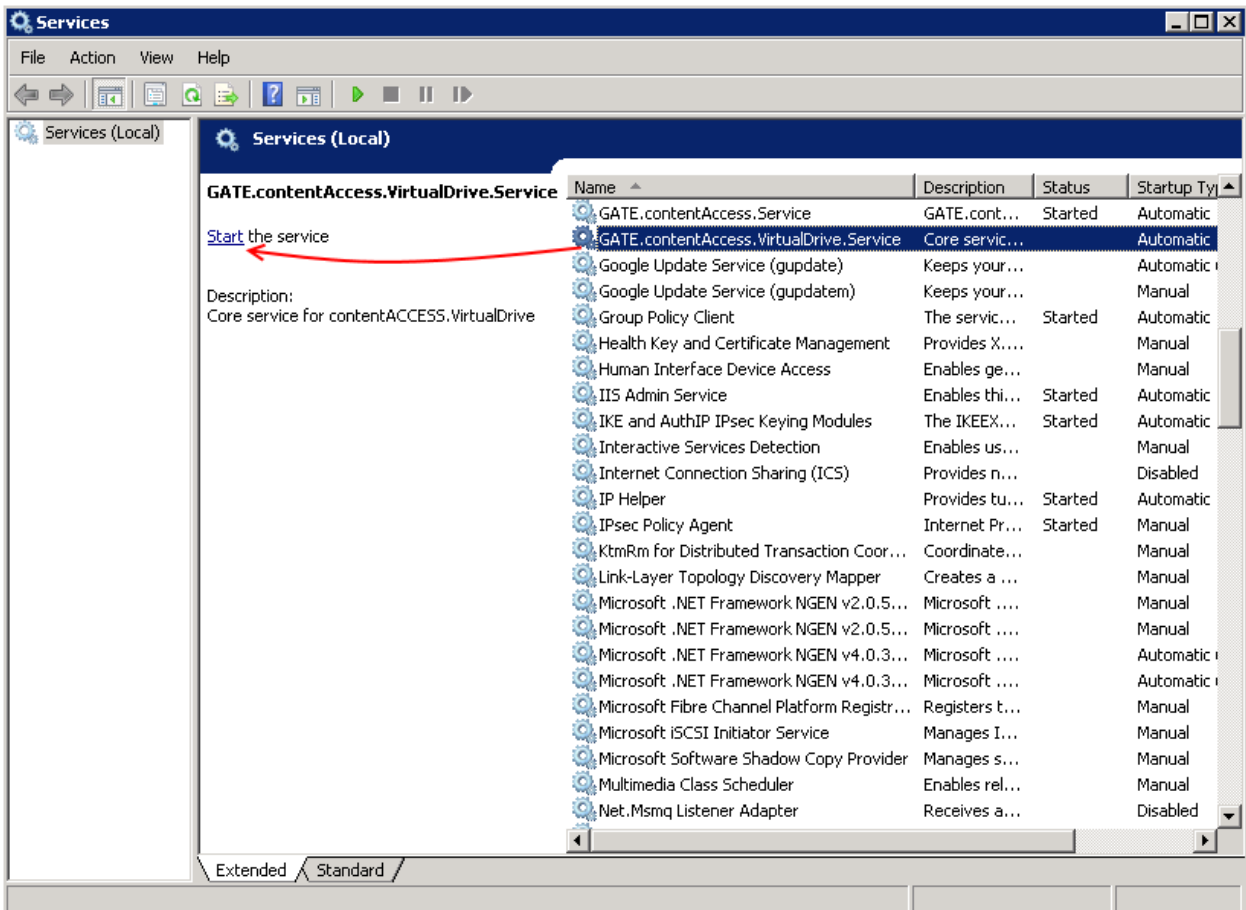
Click **OK**.

5. In the last step of installation click on **Install** button and wait until the wizard finishes the installation process, then click on **Finish**:



Start up the Service

After the installation process is complete, navigate to the service of Virtual Drive (Gate.contentAccess.VirtualDrive.Service) and manually start up the service:





After the Service has been started the Virtual drive (by default G drive) will appear between the local drives:

